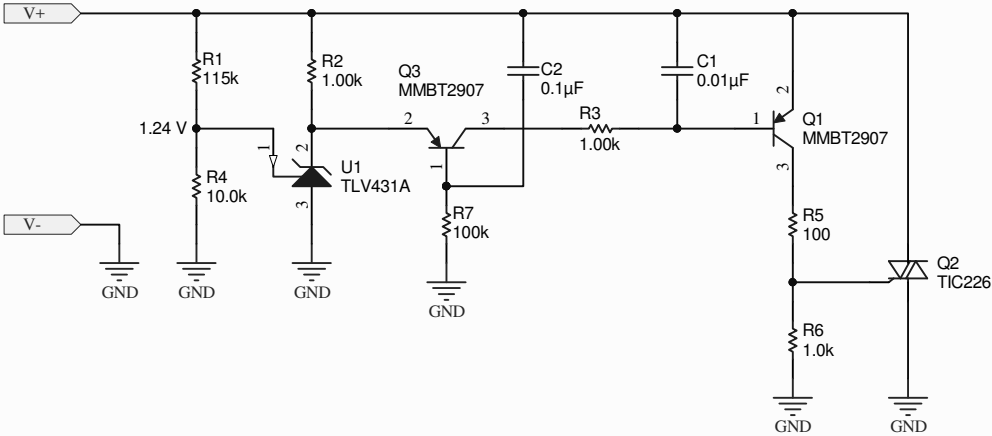


Revision History

Revision	Notes
A	* First Version
B	* Second Version to fix issue when applying a voltage with a steep rise time

TRIAC schaltet bei 15.5 V Eingangsspannung



Title: "Crowbar" Overvoltage Protection			Engineer: Matthias Ulmann, DK9MAT	
Size: A4	Number: PPx2	Revision: B		
Date: 6/23/2022	Time: 6:22:51 PM	Sheet of		
File: PPx2RevB.SchDoc				